



Leica Geosystems – Mobile Mapping Release Notes

Product Version 2025.1.1.41 Leica Pegasus OFFICE

Installer LeicaPegasusOffice-v2025.1.zip

Date 20 May 2025

From Mobile Mapping Software Product Management Team



Content

1	Introduction.....	3
1.1	Availability.....	3
1.2	What's New	3
2	New features	3
2.1	Support of Leica Pegasus TRK300	3
3	Improvements.....	3
3.1	Updated ghost filter for the Leica Pegasus TRK500/700 Neo	3
3.2	Support for CLM to version 2.20	3
3.3	Support for CUDA 12.1 for image anonymisation	3
3.4	Fix for GCP optimisation error with single-track measurements	3
3.5	Fix for GCP alignment across multi-job bundles	4
3.6	Fix for automatic GCPs with disabled first link	4
3.7	Fixed bugs in the split tracks tool	4
3.8	Fix for RGB colourisation with low image frame rates	4
3.9	Fixed display of empty jobs from Pegasus FIELD in Pegasus OFFICE	4
3.10	Fixed incorrect average speed in reports.....	4
3.11	Fixed the LGSx export issue related to the January 2025 date constraint in CLM.....	4
3.12	Fixed the anonymisation issue for Pegasus:Two, Pegasus:Two Ultimate and Pegasus:Backpack.....	4
3.13	Fixed image orientation and colourisation issues for Pegasus:Two and Pegasus: Backpack.....	4
3.14	Minor interface and user experience improvements.....	4
4	Important Notes	5
4.1	Note on PC-GPU requirements	5
4.2	Compatibility	5
4.3	Support of virtual machines	5

1 Introduction

1.1 Availability

The **2025.1.1.41 release of Leica Pegasus OFFICE** will be available for download via myWorld starting in the fourth week of May 2025.

Users with active Customer Care Package maintenance as of 1 October 2024 can install and run the new software release for free.

1.2 What's New

Pegasus OFFICE 2025.1.1.41 is a major release that includes new features and improvements to the product.

The main new features and bug fixes in this release include:

- Support for the Leica Pegasus TRK300
- Updated ghost filter for Leica Pegasus TRK500/700 Neo, improving quality and processing speed
- Resolved issues in the “Align to GCP” workflow when GCPs were measured only in one job of the bundle
- Improved handling of automatic GCP alignment when links are disabled
- Corrected RGB colourisation of point clouds for datasets with image frame rate of 1-2 m

2 New features

2.1 Support of Leica Pegasus TRK300

The Leica Pegasus TRK300 is a lightweight mobile mapping system that extends the existing TRK portfolio. Designed for ease of use, the Pegasus TRK300 enables single users to efficiently collect geospatial data with reliable coverage and detailed point clouds. With two 32-channel multibeam scanners and a range of up to 300 metres, it supports applications such as urban modelling, infrastructure documentation, asset management, and mining surveys. Built for demanding environments, the Pegasus TRK300 combines portability, durability, and advanced functionality in a compact, practical design.

3 Improvements

3.1 Updated ghost filter for the Leica Pegasus TRK500/700 Neo

A new version of the ghost filter has been introduced. This filter helps to reduce the noise generated by highly reflective surfaces, and with this new version, the speed and quality performance have been improved.

3.2 Support for CLM to version 2.20

Pegasus OFFICE updated the support for the new Client License Management (CLM) version 2.20.

3.3 Support for CUDA 12.1 for image anonymisation

Pegasus OFFICE updated the support of CUDA 12.1 for the anonymisation algorithm.

3.4 Fix for GCP optimisation error with single-track measurements

An issue where Pegasus OFFICE displayed a “There are no links” error when each GCP was measured in only one track has been resolved. It is now possible to align with single-track GCPs.

3.5 Fix for GCP alignment across multi-job bundles

Previously, if a job within a bundle had no GCP links, the system showed an “impossible to lock job” error. The GCP alignment process now correctly includes all jobs, even those without GCP connections.

3.6 Fix for automatic GCPs with disabled first link

In prior versions, some disabled GCP links, automatically measured, were still considered in alignment, leading to incorrect results. Disabled links are now properly excluded during the alignment process.

3.7 Fixed bugs in the split tracks tool

- If the “Split track” tool fails, the original track is restored to its previous state
- Double-counting of images in the report after splitting has been resolved

3.8 Fix for RGB colourisation with low image frame rates

Incorrect RGB colourisation for datasets with an image frame rate of 1–2 m has been corrected.

3.9 Fixed display of empty jobs from Pegasus FIELD in Pegasus OFFICE

Jobs without captured tracks are no longer visualised in Pegasus OFFICE.

3.10 Fixed incorrect average speed in reports

An issue where the reported average speed was incorrect has been resolved in this release.

3.11 Fixed the LGSx export issue related to the January 2025 date constraint in CLM

Export errors caused by outdated libraries have been resolved. Updated libraries now ensure LGSx exports work correctly.

3.12 Fixed the anonymisation issue for Pegasus:Two, Pegasus:Two Ultimate and Pegasus:Backpack

From this release onwards, it is possible to anonymise datasets from Pegasus:Two, Pegasus:Two Ultimate and Pegasus:Backpack

3.13 Fixed image orientation and colourisation issues for Pegasus:Two and Pegasus:Backpack

Images and point clouds from Pegasus:Two and Pegasus: Backpack are now correctly aligned after anonymisation. A previous issue affecting colourisation has been resolved.

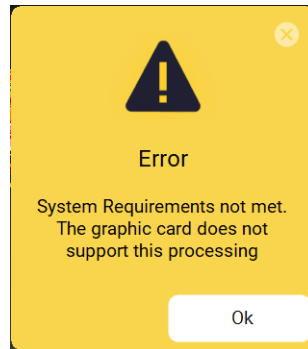
3.14 Minor interface and user experience improvements

This release included several minor bug fixes, improvements to user experience, and interface improvements, such as text enhancements.

4 Important Notes

4.1 Note on PC-GPU requirements

Image anonymisation and point cloud classification depend entirely on the hardware used on the PC. If the graphics card requirement does not match, the process is stopped with a notification:



The graphics card computing capability needs to be 7.5, 8.6, or 8.9.

Compare the listed computing capabilities for each Nvidia chipset here:

<https://developer.nvidia.com/cuda-gpus>

Computation capabilities, other than those listed above, must be checked by the Leica Geosystems R&D department to ensure the image anonymisation works according to expectations.

If the graphics cards should be used with higher computation capabilities, users should contact the Leica Mobile Mapping support team to verify whether the hardware can function accordingly.

4.2 Compatibility

With the 2025.1.1.41 release, Leica Pegasus OFFICE is supporting these versions of the following Hexagon/Leica Geosystems software products:

- Leica Infinity v4.1.1.45440
- Inertial Explorer SDK 9.0
- Leica CLM 2.20

4.3 Support of virtual machines

Please note that running the software on virtual machines is not supported.